





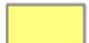


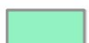


Legende:

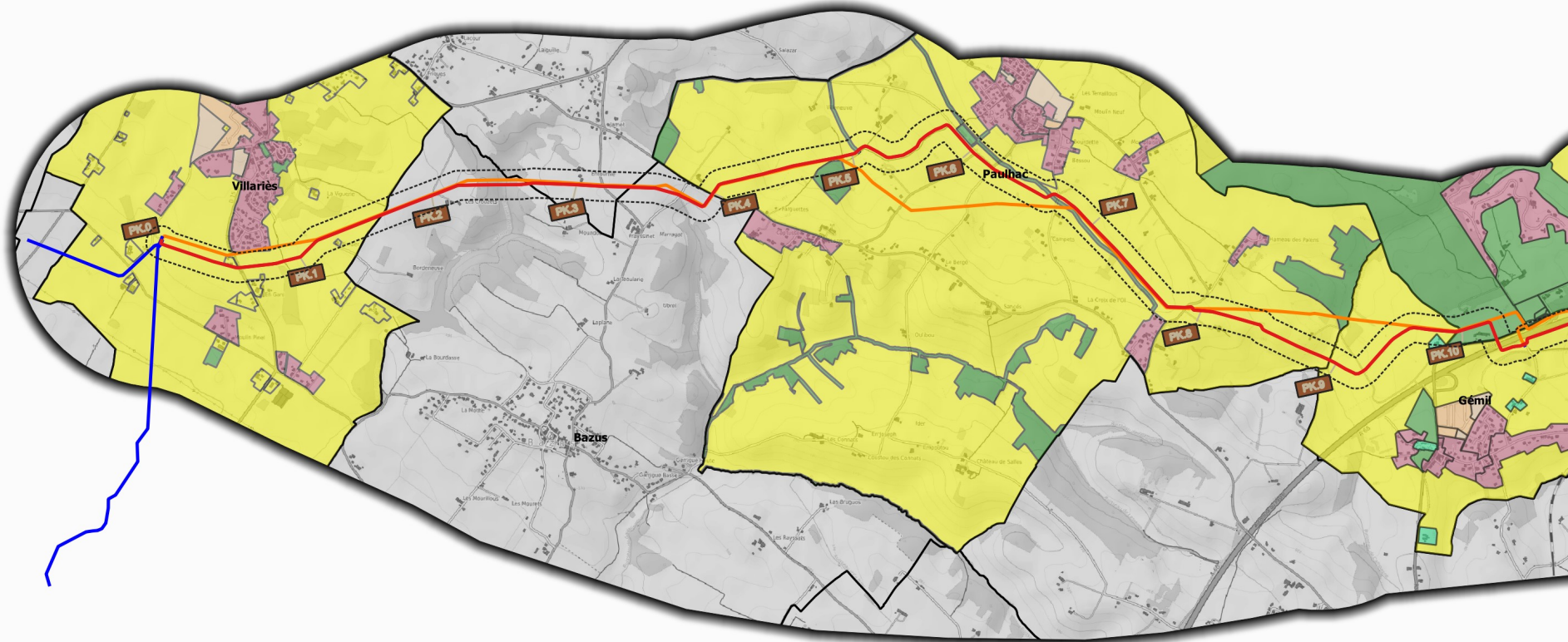
-  Future canalisation
-  Canalisation actuelle
-  Branchements

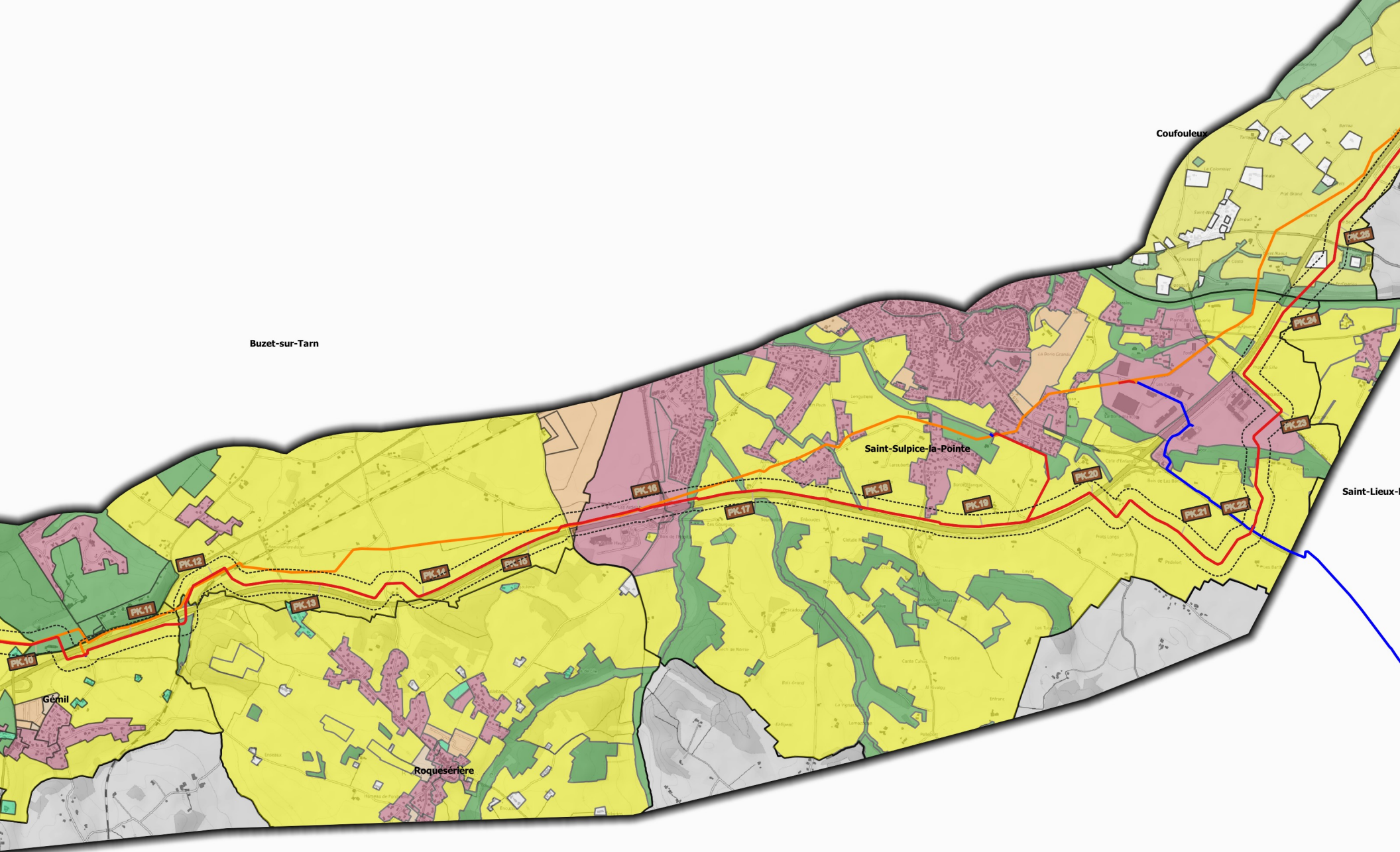
Zonages des documents de l'urbanisme (PLU/PLUi)

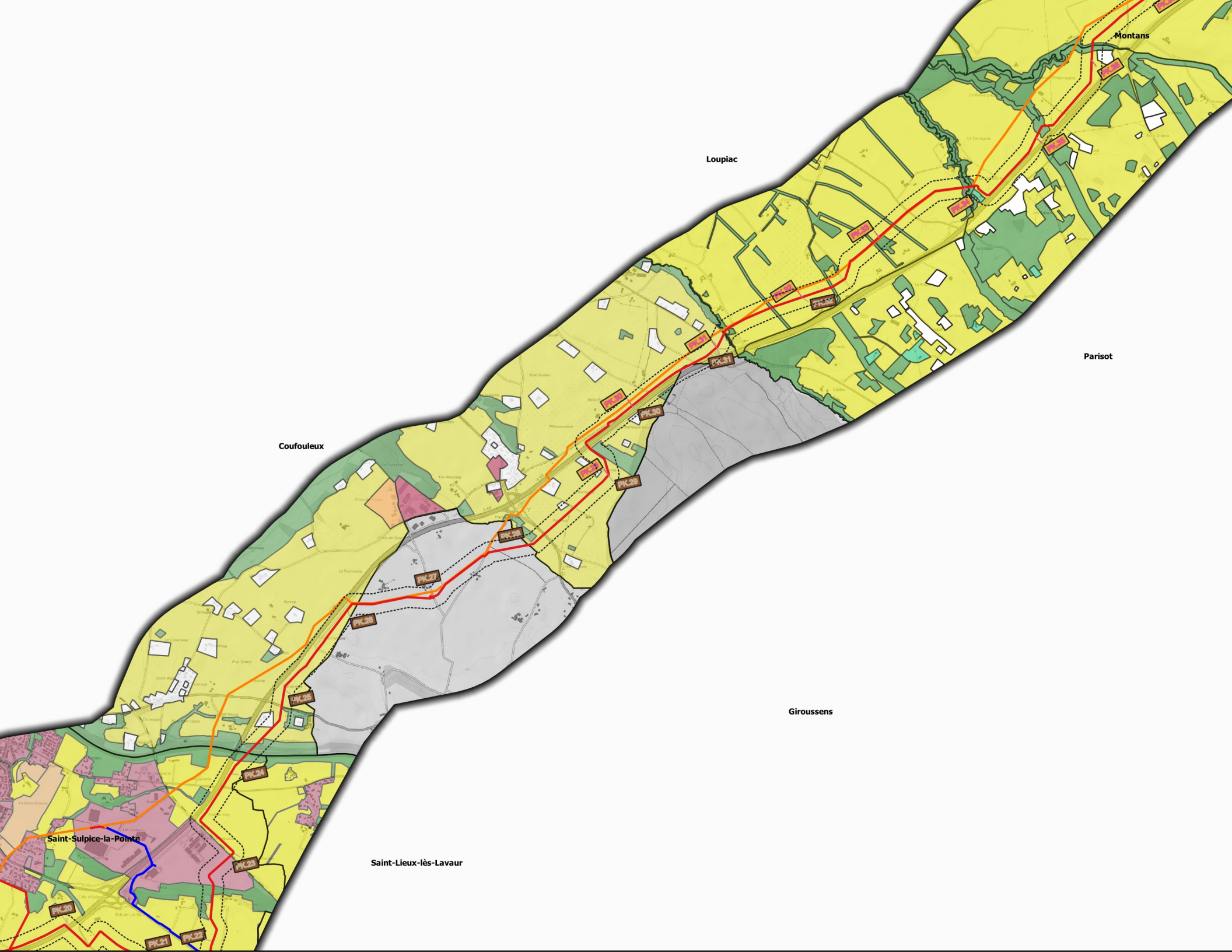
-  U: zone urbaine
-  AUc: zone destinée à l'extension de l'urbanisation à court et moyen terme, et à vocation principale d'habitat
-  AUs: zone à vocation principale d'équipements publics destinée à être urbanisée à moyen ou long terme
-  A: zone agricole
-  Ah: constructions « isolées », groupées ou non, qui n'ont plus de lien avec l'agriculture
-  N: zone naturelle
-  Nh: zone naturelle peu équipée, zone d'habitat existant, isolé, ancien ou discontinu avec du pavillonnaire récent

Montjoire

Buzet-sur-Tarn







Montans

Loupiac

Parisot

Coufouleux

Giroussens

Saint-Sulpice-la-Pointe

Saint-Lieux-lès-Lavaur

PK20
PK21
PK22

PK23

PK26

PK27

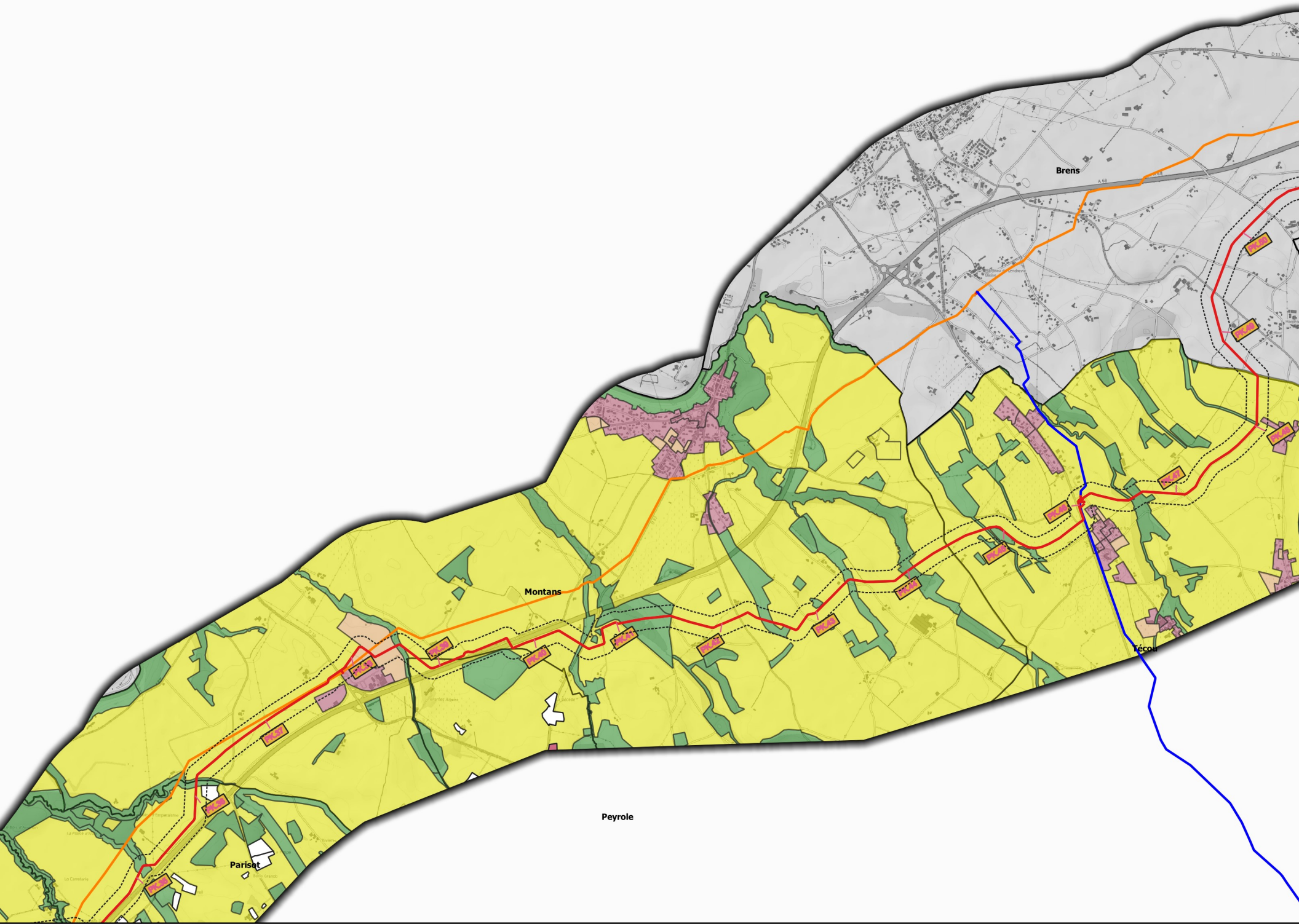
PK28

PK29

PK30

PK31

PK32



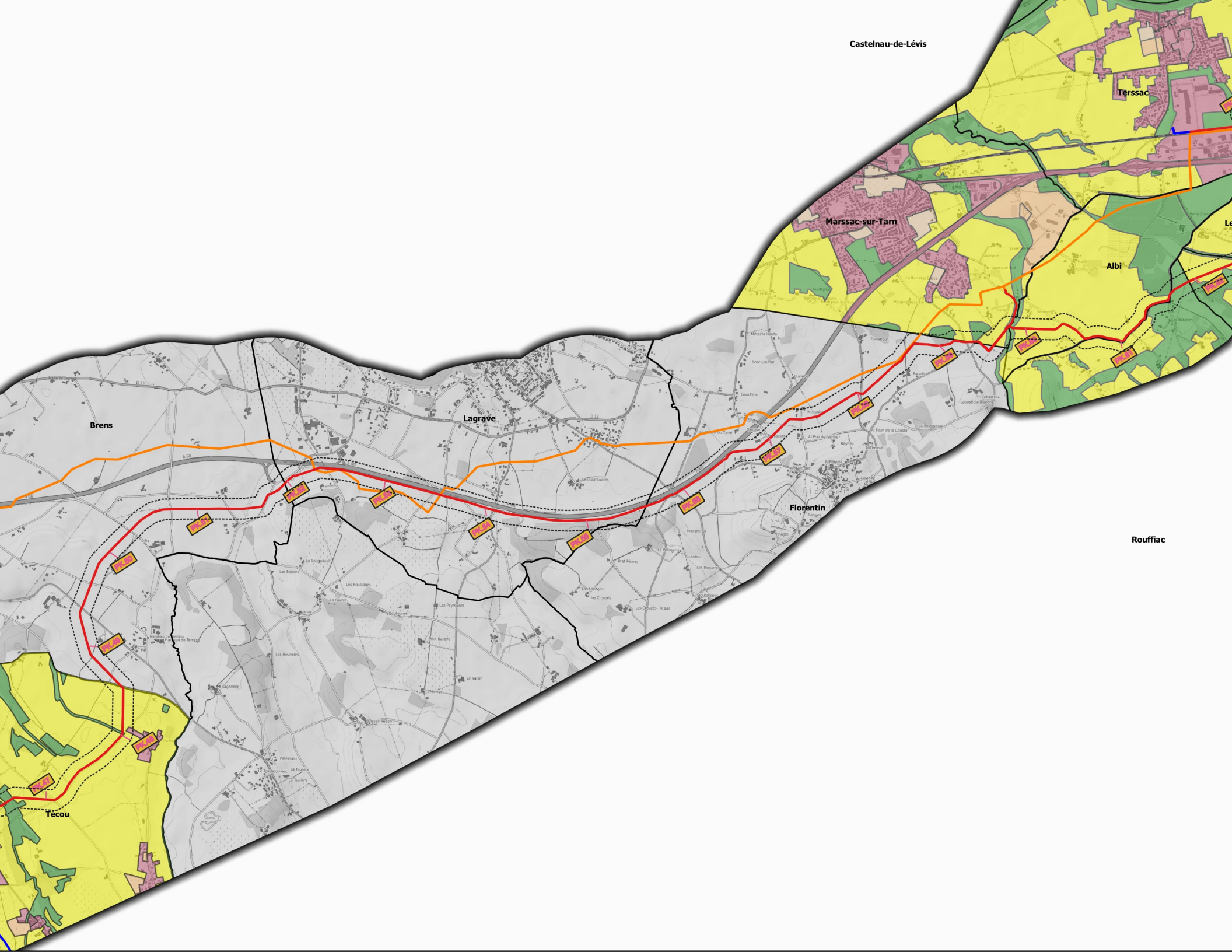
Brens

Montans

Peyrole

Pariset

Éco



Castelnuau-de-Lévis

Tèrressac

Marssac-sur-Tarn

Albi

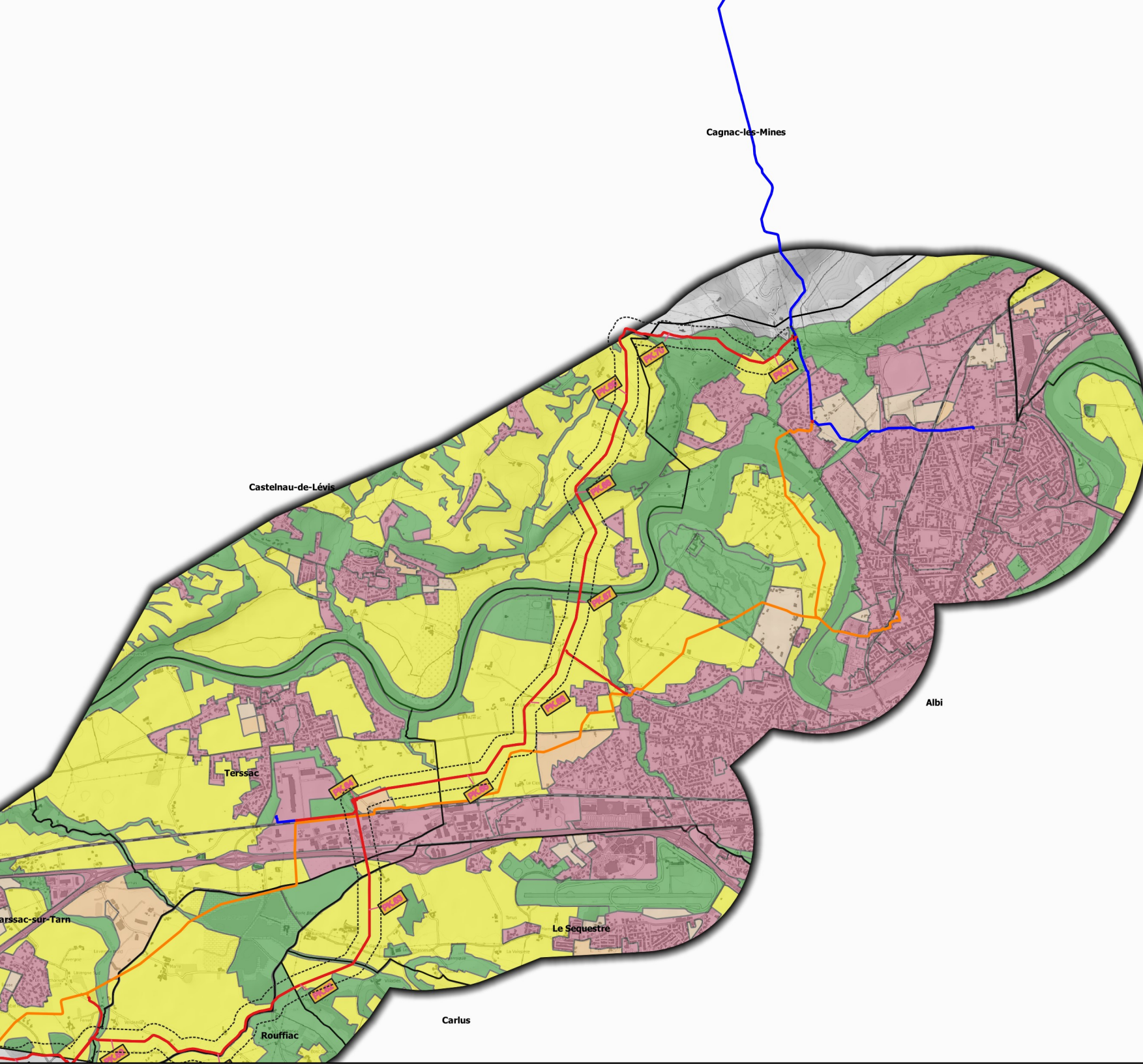
Brens

Lagrave

Florentin

Rouffiac

Tècou



Cagnac-les-Mines

Lescure-d'Albigeois

Castelnau-de-Lévis

Albi

Terssac

Le Sequestre

Carlus

Rouffiac

Marsac-sur-Tarn