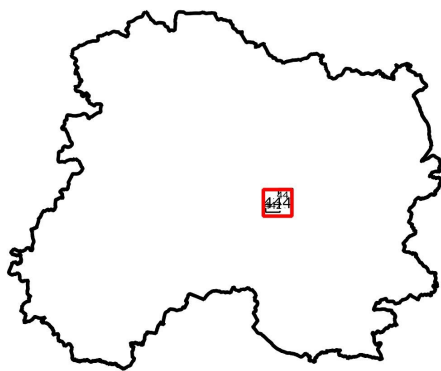


# EARL MAILLET-DURIN






## LOCALISATION DES ZONES ENVIRONNEMENTALES






0 20 40 km

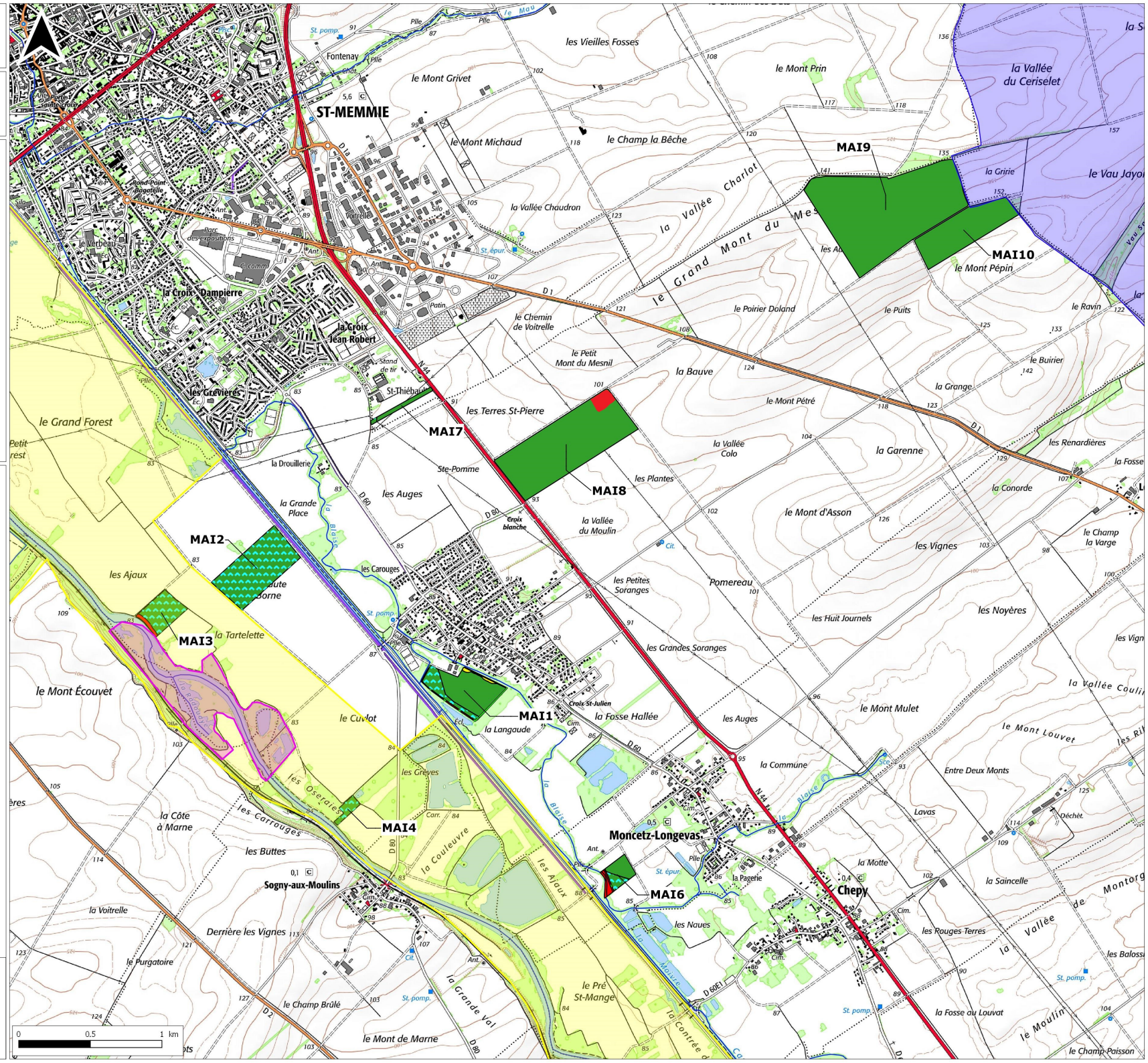
### Légende :

Aptitude des parcelles :

-  Apte
-  Apte sous conditions (Inondable)
-  Exclu (Proximité habitations 50 m si non enfouissement immédiat)
-  Exclu (Proximité habitations 15 m, cours d'eau 10 m si bande enherbée sinon 35 m)
-  Exclu (Bande enherbée)

Zones environnementales :

-  ZNIEFF de type 1
-  ZNIEFF de type 2
-  SAGE

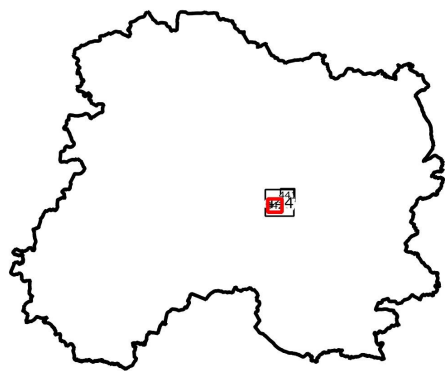


0 0,5 1 km



# EARL MAILLET-DURIN

## LOCALISATION DES ZONES ENVIRONNEMENTALES



0 20 40 km

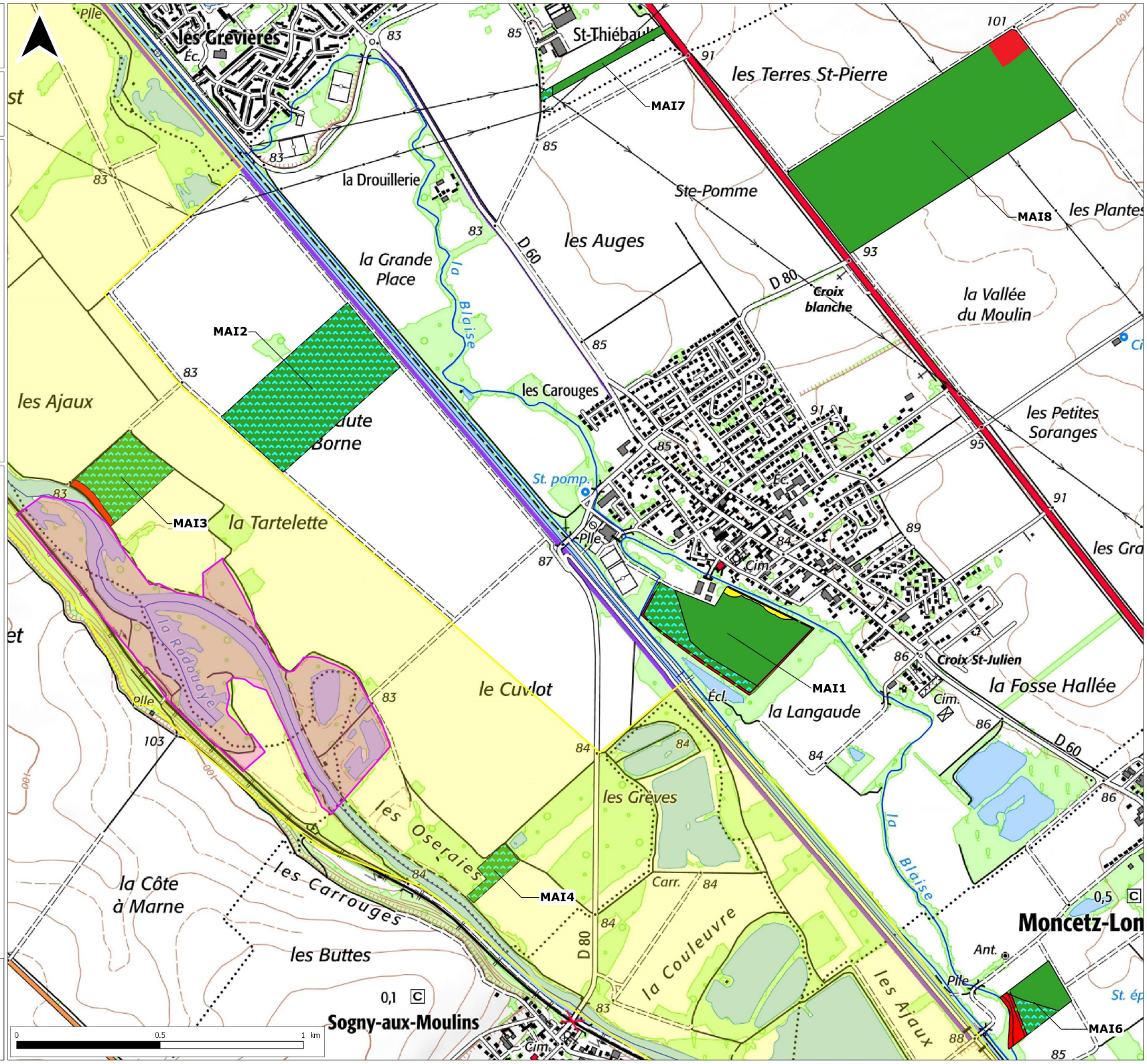
### Légende :

#### Aptitude des parcelles :

- Apté
- Apté sous conditions (Inondable)
- Exclu (Proximité habitations 50 m si non enfouissement immédiat)
- Exclu (Proximité habitations 15 m, cours d'eau 10 m si bande enherbée sinon 35 m)
- Exclu (Bande enherbée)

#### Zones environnementales :

- ZNIEFF de type 1
- ZNIEFF de type 2



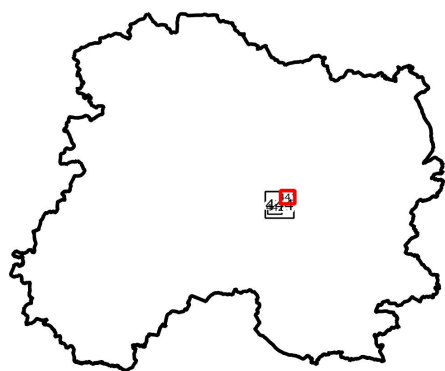
Source : IGN Scan 25 2013  
Dossier : carte\_earl\_maillet\_durin.qgs  
Réfèrent : brissonj51d  
Date : 01.12.2022

0 0,5 1 km



# EARL MAILLET-DURIN

## LOCALISATION DES ZONES ENVIRONNEMENTALES



0 20 40 km

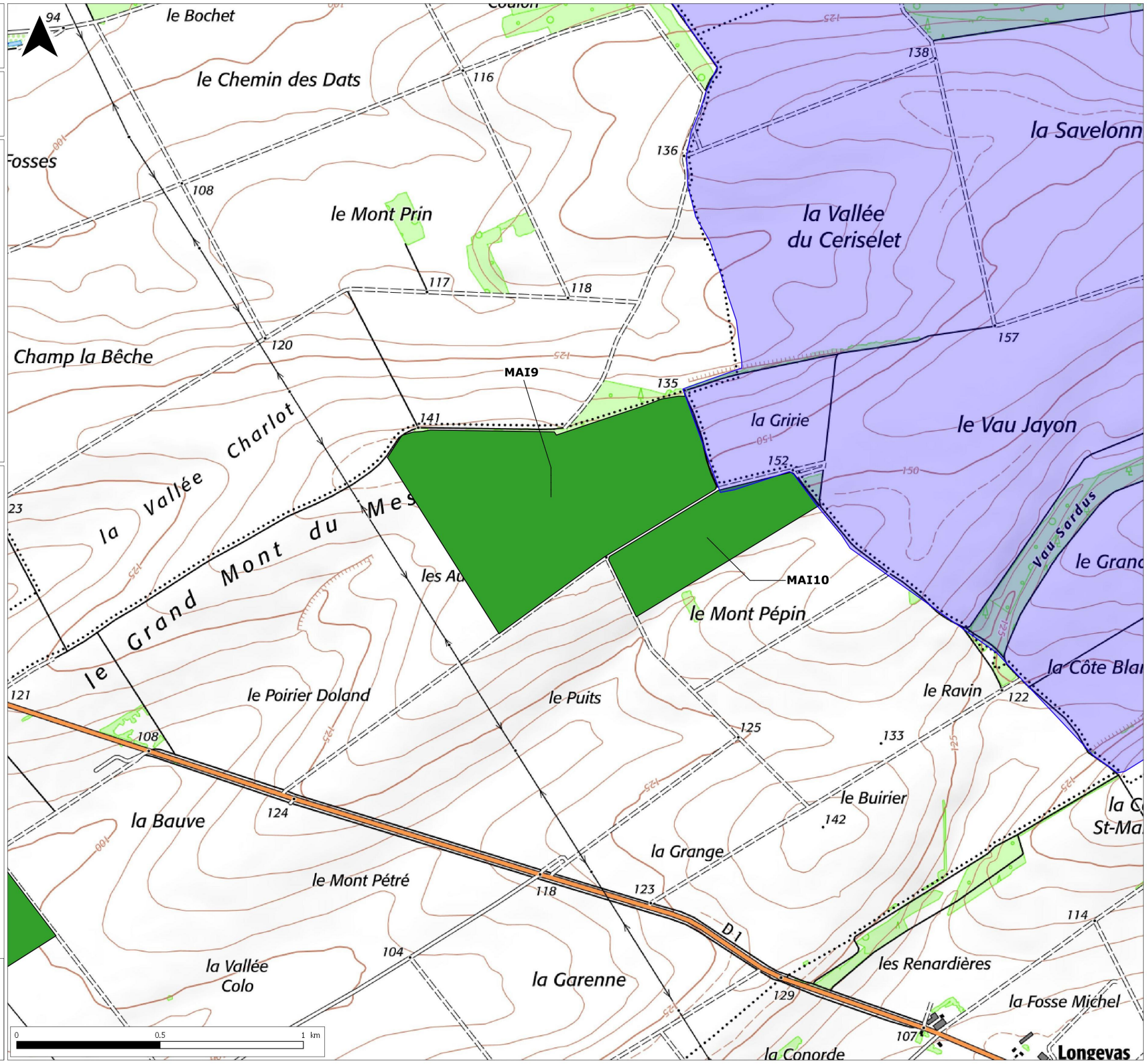
### Légende :

Aptitude des parcelles :

 Apte

Zones environnementales :

 SAGE



0 0.5 1 km

Source : IGN Scan 25 2013

Dossier : carte\_earl\_maillet\_durin.gqs

Référent : brissonj51d

Date : 01.12.2022