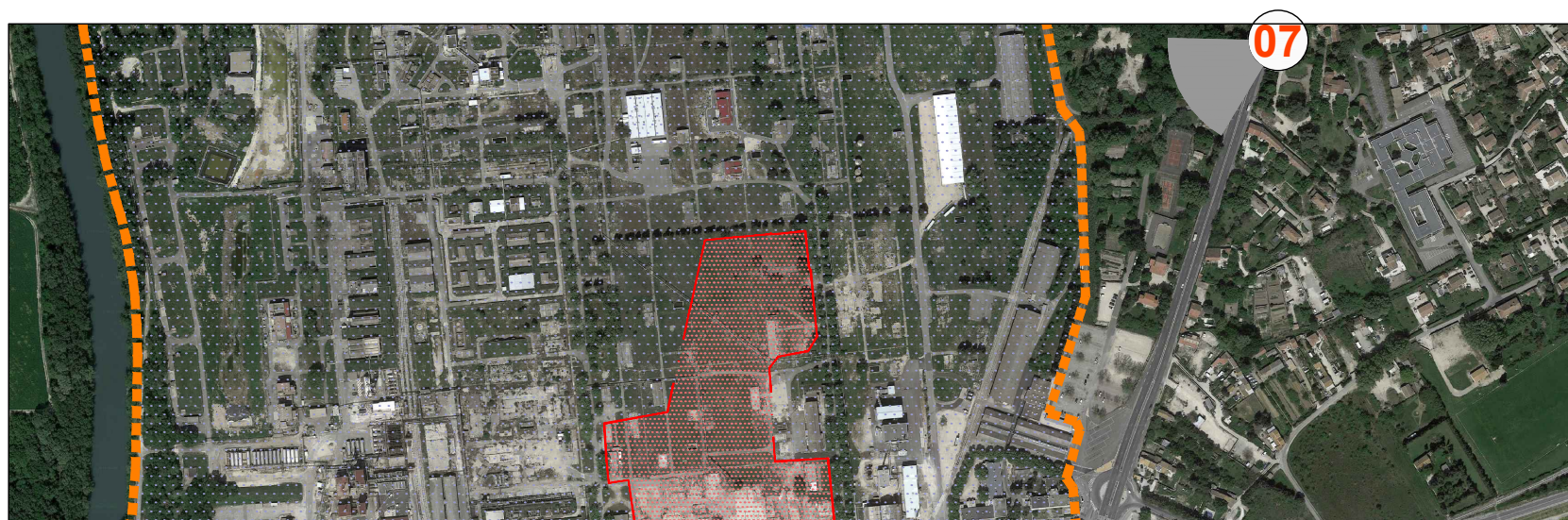


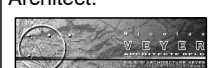





Simulation visuelle réalisée le long de la D907, au nord-est du site d'Eurengo.  
 Aucune visibilité sur la centrale photovoltaïque n'est possible depuis ce point de vue et plus globalement sur l'entièreté de la D907 - Infographie ENCIS Environnement



Engineering Design :  <b>CVE Solar</b> 5 place de la Joliette 13002 Marseille	Approved: 	Architect:  <b>SAS d'Architecture VEYER</b> Chemin des Roquettes 13720 La Bouilladisse
 <b>CVE Solar</b> 5 place de la Joliette 13002 MARSEILLE FRANCE  Tel : +33 4 86 76 03 60 www.cvegroup.com	Title: <b>Centrale photovoltaïque de Sorgues Insertions</b>	
Copying of this document and distribution to others and the use or communication of the contents thereof are forbidden without expressed authority of Cap Vert Energie. Offenders are liable to the payment of damages.	Planning Phase: <b>Projet / APD - PC</b>	Document-No.: <b>PROJ PC 6 - A3 13</b> Status: 2024-02-20   Phase Project   Pièce PC   -   Format   Planche N°